



## 1, 2 & 3 BEDROOM LUXURY APARTMENT HOMES

# FEATURES & AMENITIES

Hardwood Style Flooring | Granite Countertops | Brushed Nickel Hardware | Built-In Microwave Ovens | Convenient In-Home Charging Ports | Elevator Access to All Floors | 9-Foot Ceilings | Ceiling Fans w/Designer Lighting in Living and Bedrooms | Upgraded 42" Cabinetry | In-Unit Washers & Dryers | Stainless Steel Appliances | Walk-In Closets | Ceramic Tile Bath Surrounds | Designer Lighting | Deep Undermount Kitchen Sinks w/Gooseneck Faucet | Smooth Surface Cook Tops | 2" Plantation Blinds | Side-by-Side Refrigerators\* | Jetted Garden Tubs\* | Soaking Tubs\* | Integrated Clubhouse | Gated Community | Fitness Center w/Cardio and Spin Rooms | Complimentary Health and Conditioning Classes | Zen Room w/Massage Chairs | Billiard Room | On-Site Private Tanning | Zero-Entry Resort Pool w/Cabanas and Covered Seating Area | Gas and Charcoal Grilling Stations | Concierge Service | On-Site Dry Cleaning Valet Service | Coffee Bar | Pet Park w/Wash Station | Play Space | Car Care Center | Valet Trash Service | Paved Jogging Trail | Attached & Detached Garages | Storage Spaces Available | Two On-Site Lakes w/Lakeside Gazebo

\* In Select Homes



## CLOSE TO IT ALL



**CITI LAKES**  
A PREFERRED APARTMENT | **COMMUNITY**<sup>SM</sup>



# 407.778.4338

12024 Meadowbend Loop | Orlando, FL 32821

[CitiLakes-Apts.com](http://CitiLakes-Apts.com)



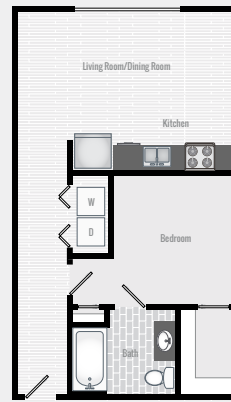
# LIVE, WORK, RELAX



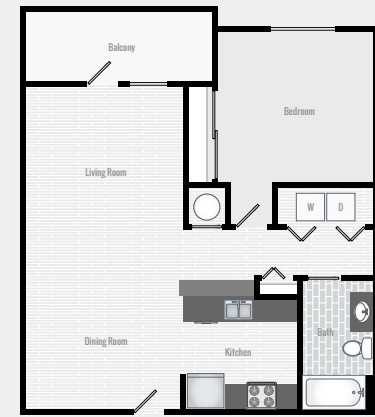
*Citi Lakes is for those who desire convenience and a beautiful array of services in the best location in town!*

*You'll love calling Citi Lakes home! Our distinct community features one, two and three bedroom apartment homes. Generous living spaces give you the freedom to design and customize your home. Enjoy entertaining your friends and family in a gourmet kitchen with designer appliances and finishes.*

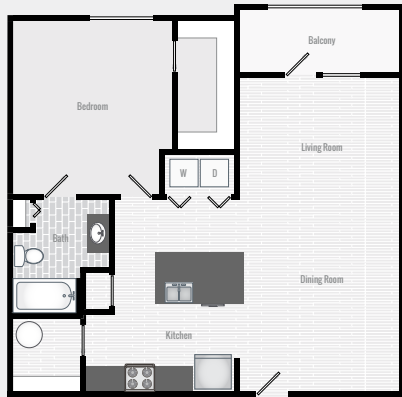
*Citi Lakes is a one-of-a-kind experience you simply won't want to miss!*



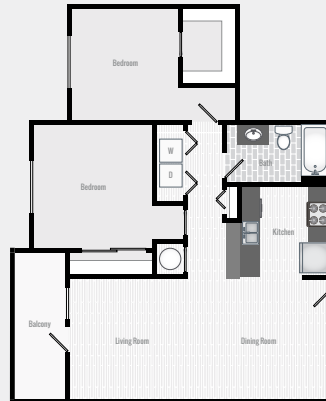
**A1** 1 BR | 1 BA | 500 SF



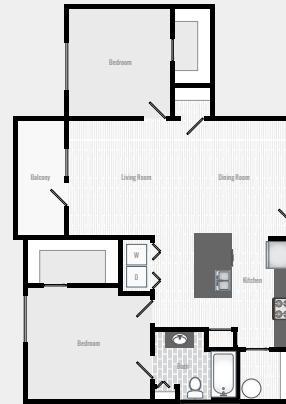
**A2** 1 BR | 1 BA | 750 SF



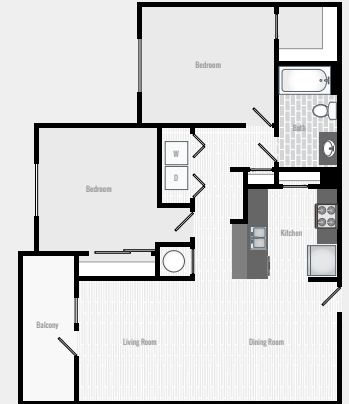
**A3** 1 BR | 1 BA | 795 SF



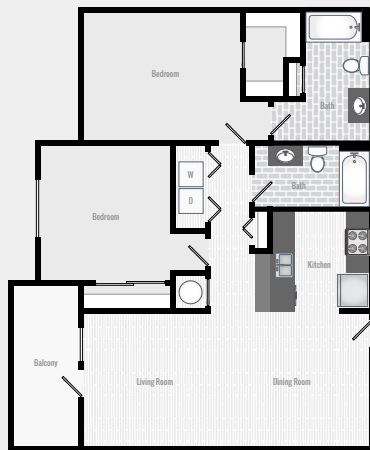
**B1** 2 BR | 1 BA | 945 SF



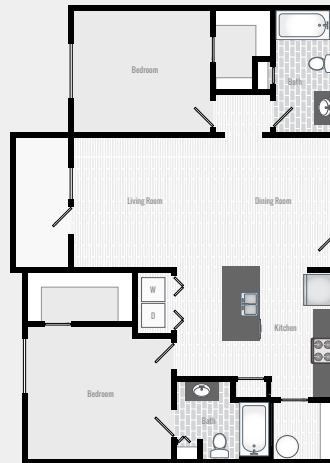
**B2** 2 BR | 1 BA | 970 SF



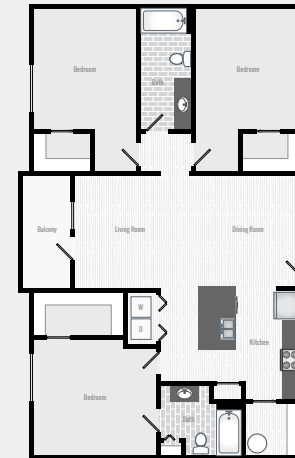
**B3** 2 BR | 1 BA | 975 SF



**B4** 3 BR | 2 BA | 1,050 SF



**B5/B6** 2 BR | 2 BA | 1,070 - 1,130 SF



**C1/C2** 3 BR | 2 BA | 1,260 - 1,320 SF